

Instructions for SSH Tunnel into X31

First Steps

Before you start this process ensure you have a valid account with a username and password on X31. Without this you cannot login to the machine

Downloading and configuring your tunnel application

You need an SSH application which will allow you to port forward a socks proxy. I recommend Putty which you can download from:

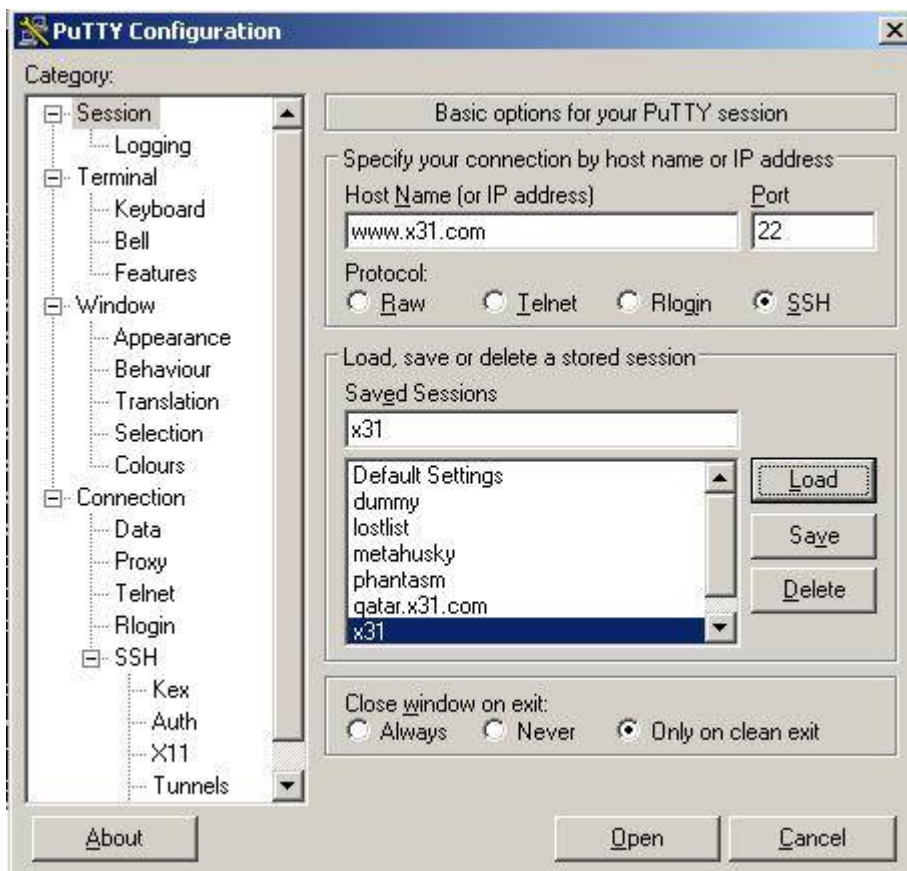
<http://the.earth.li/~sgtatham/putty/latest/x86/putty.exe>

I recommend you save the program to your desktop.

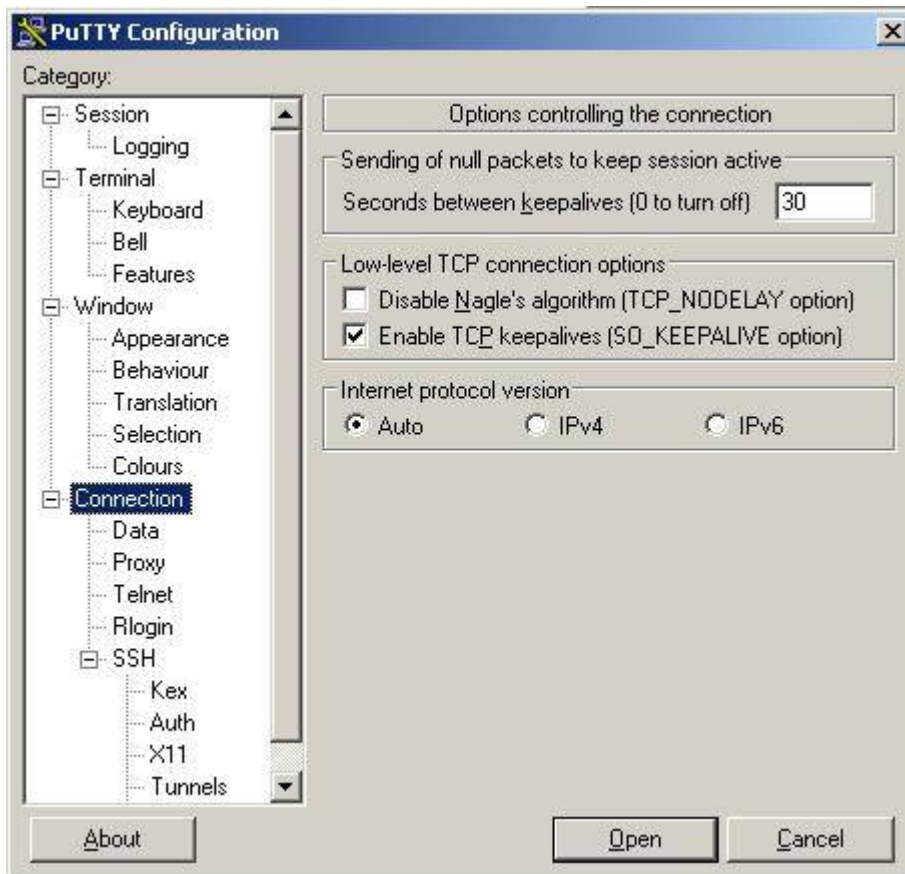
Note that when you run the program you may see a windows firewall warning. Make sure that the program is unblocked in the firewall.

Now the hard part - configuring Putty

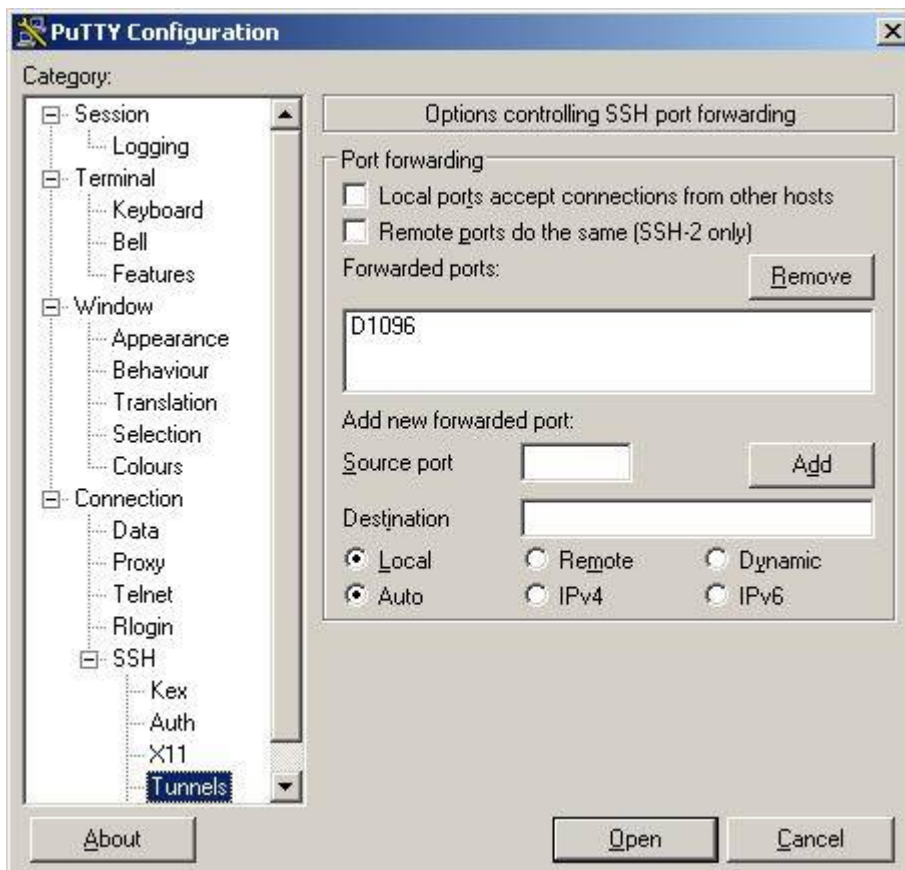
1. Run the putty program and you should get an initial configuration screen come up. Put in the address `www.x31.com` or `ams1.x31.com` (depends where your account has been setup) in the host name field and `x31` in the saved sessions field and click save. See screenshot below:



2. Then click on connection and set the keepalive to 30 seconds and enable them. See screenshot below. Note that the layout of this screen changes a little between versions of putty.



3. Now setup the port forwarding by clicking on Tunnels. Enter the port number 1096 in source port and select the Dynamic radio button. Then click Add and you should get D1096 appear in the forwarded ports area. See screenshot below.



4. This is very important - save the settings. Click on session (as in the first screenshot) and click save to save all your changes.

5. You are ready to login so double click on X31 in the area immediately below 'saved sessions'. Putty will now attempt to connect to X31. You may get a warning about the SSH key the first time you login. Just accept the key. Login with your username and password and you should get the UNIX command prompt. Just minimise the window and leave it running.

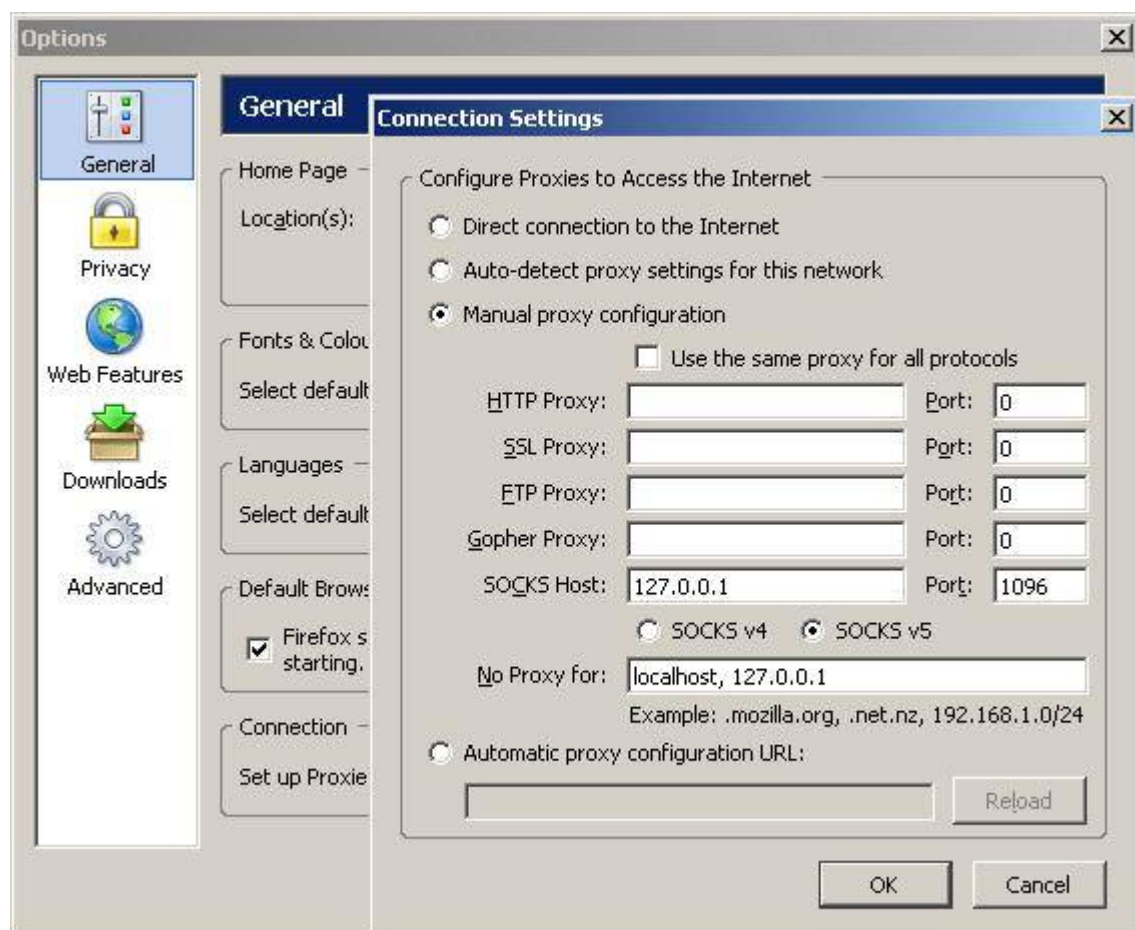
Note that in later sessions you just need to run putty from your desktop, double click on x31, login and minimise the window. Note usernames and passwords are case sensitive.

Your tunnel is up, so you have to setup the proxy in your web browser.

Setting Up your web browser

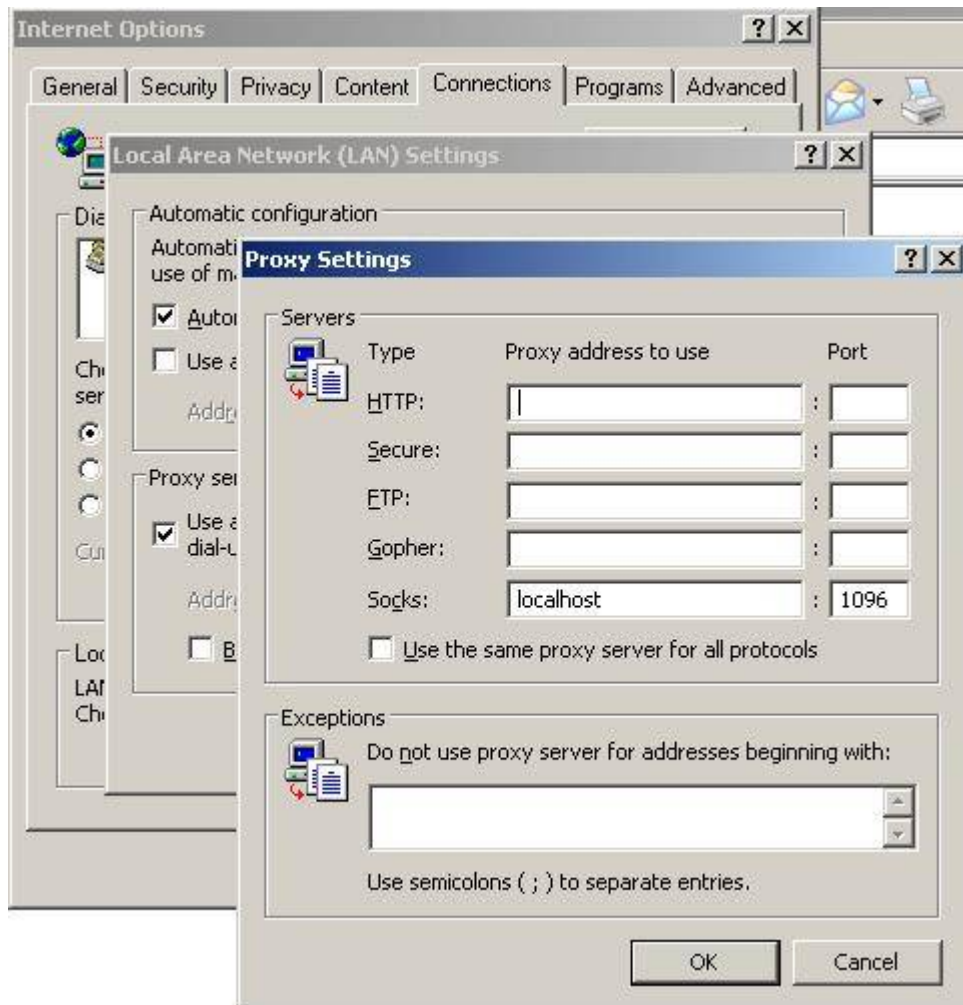
Firefox

Go into options then connection settings. See the screenshot below. Once you have made the changes. Save, exit the browser and reopen it.



Internet Explorer

Go into Internet options, connections, LAN settings, tick the box - 'use a proxy server' then click on advanced. See the screenshot below Once you have made the changes. Save, exit the browser and reopen it.

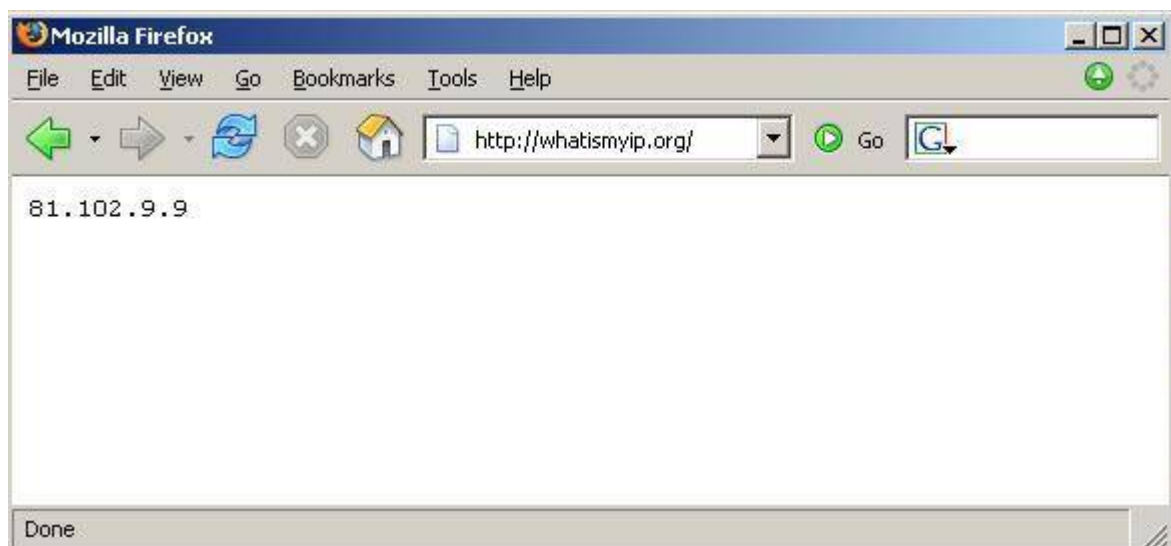


Testing the tunnel

To test the tunnel enter the following address into your browser:

<http://whatismyip.org/>

You should see 81.102.9.9 or 81.171.44.131 appear, see screenshot below



If you fail to get a webpage or a different address then something is not working. Recheck your settings and ensure you are logged into X31.

Parting notes

You can tunnel most programs which support SOCKS 5 proxy servers by setting a hostname of 'localhost' and a port number of 1096 in their configuration. This includes some instant messenger clients.

Please do not use the tunnel for bandwidth intensive clients such as Limewire or other peer to peer programs as X31 is a shared system on a busy network connection.

Have fun on the net

Andy